



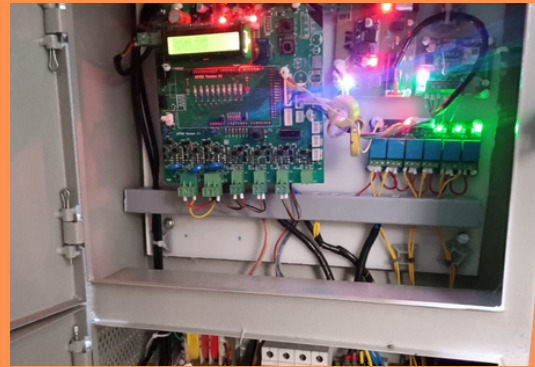
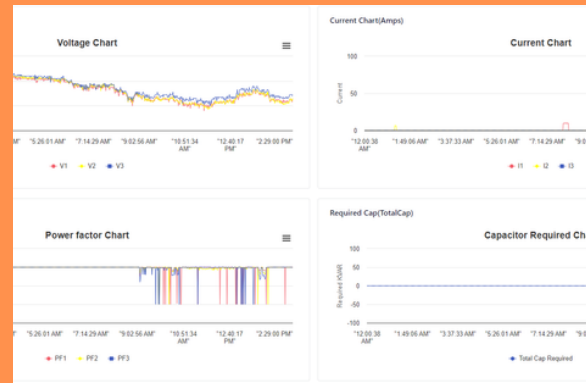
GO DEEP WITHIN...

Delving Research & Development

Private Limited

DelSmartIoT - DelTex

(ONLINE TEXTILE MACHINE MONITORING & CONTROL SYSTEMS)



OUR CONTACT:



+91 9894995235

+91 9894995423



www.delvingrd.com



delvingrd@gmail.com



53- III Cross, MKP Colony,
Ganapathy, Coimbatore,
Tamil Nadu, India - 641006

DelSmart IoT based Online
Monitoring and Control Systems

DelSmartIoT

DelTex (online Textile Machine Monitoring System)

DelTex can measure individual machines 3 phase Electrical Parameters and Physical parameters like front Roller Speed, Spindle Speed, Temperature and Humidity can be measured.

Power Factor improvement by compensating for the reactive power. It also has alarm / Trip controls



DelSmartIoT - DelTex Features

- The Following Electrical parameter measurement will be shown in the display
 - 3 Phase Voltage,3 Phase Current (3 Current Transformer (CT)method)
 - 3 Phase Power Factor,3 Phase kWh,3 Phase kVAh,3 Phase kVArh
 - Maximum Demand Value alert
- Front Roller Speed, Spindle Speed, Temperature, and Humidity will be measured
- Time of Day (ToD) for kWh, kVAh, and kVArh will be shown in Display
- For Power Factor Improvement following details will be shown in the display
 - Required Capacitor Value to improve PF above 0.95 Capacitors
 - Capacitor ON/OFF status
- Online Monitoring via GSM for a minimum of every 1 Minute of data (Can be Configurable from a minimum of 1 minute to every 1 hour) and it can be changed in software and the device will work in two-way Communication.
- It can be Remotely Configurable for Abnormal values (Over and Under Voltage Limits, Over Current limit) settings
- Abnormality-based SMS/e-Mail alert for following concerned persons
 - Over Current/ Overloading alert
 - Over and Under Voltage alert
 - Low PF alert
 - Phase loss/Cut alert
 - Unbalance Voltage alert
 - Unbalance load alert
- Individual Machine Monitoring and Controls

The dedicated software package

- Load active and inactive machine Reports selected day
- Injected kVAr Analysis Chart of the selected day
- Voltage and Current Chart of the selected day
- Total Unit Consumption of the selected day
- Individual machine Speed Chart
- Individual Machine Temperature Chart
- TPI & DeliveryRate Chart
- Energy Report of all electrical parameters with corresponding capacitor ON/OFF details
- Required Capacitor Value Chart of the selected day
- Time of Day unit consumption with Maximum Demand Chart of the selected day
- Individual Capacitor Active and Inactive Time in a Day
- Total Injected kVAr Value of the selected day
- Individual Capacitor ON/OFF Log details
- Abnormality Log
- Annual data Analysis
 - Month-wise Production & EB Cost
- Production Reports
 - Department wise
 - Month wise Reports
 - Date wise Reports
 - Machines Wise
 - Month wise Reports
 - Date wise Reports
 - Waste Entry Reports
- Unit per KG (UKG) Reports
- Spinning Quality Check Reports
- Real-Time Closing Stack Reports
- Overall individual machine productions, UKG, Electrical Parameters, and Load active hours all are in Single View
- Maintenance and Service
 - Individual machine maintenance schedule
 - Machine wise & Service wise history
- Technical Parameter Feeding through Software